

# IMPACT OF CONSTRUCTION WASTE MINIMIZATION AT CONSTRUCTION SITE: CASE STUDY

Usman Aminu Umar<sup>a\*</sup>, Nasir Shafiq<sup>a</sup>, Amirhossein Malakahmad<sup>a</sup>, Muhd Fadhil Nuruddin<sup>a</sup>, Mohd Faris Khamidi<sup>b</sup>, Ibrahim Umar Salih<sup>a</sup>

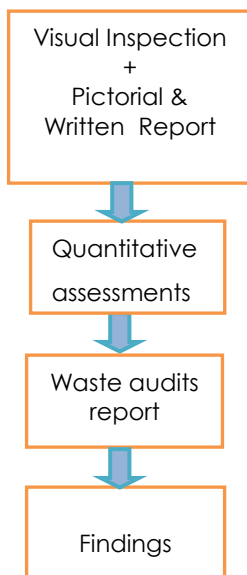
<sup>a</sup>Department of Civil and Environmental Engineering, Universiti Teknologi PETRONAS, 31750 Tronoh, Perak, Malaysia  
<sup>b</sup>Department of Built Environment, University of Reading, Menara Kotaraya, 80000 Johor Bahru, Malaysia

## Article history

Received  
2 June 2014  
Received in revised form  
5 September 2014  
Accepted  
25 December 2014

\*Corresponding author  
usmanaumar@yahoo.com

## Graphical abstract



## Abstract

Waste reduction in the construction sector is essential not just from the position of overall performance, but also interests escalated recently about the detrimental impact of the waste of construction materials on the natural surroundings. The reuse and recycling of construction elements used to be substantial due to material scarcity during the war and post-war era, specifically when the price of virgin materials keep inflating. Nevertheless, the motivation to reuse and recycle construction materials has fallen ever since the flow of raw materials has grown more consistent and satisfactorily. This paper involves an ongoing sequence of waste audits at Universiti Teknologi Petronas (UTP) R&D construction sites. The methodology consists of discussion, observation and quantitative evaluations of the kinds and distribution of wastes. The finding of this study demonstrates that the project aimed at both minimizing the volume of waste generated and diverting as much waste as possible from landfill that contribute to the recycle with over 1200 tonnes of material which constitute about 73% of recycle and reused rate mainly from timber and metal.

**Keywords:** Waste minimization, construction waste, reuse, recycle

© 2016 Penerbit UTM Press. All rights reserved

## 1.0 INTRODUCTION

The construction industry is accountable for producing a large multitude of various waste materials, the volume and kind of which relies on conditions like the phase of construction, form of construction work and techniques on-site. Construction and demolition (C&D) waste is produced during new construction, demolition, and renovation of buildings and structures. C&D waste consists of,

concrete, bricks, soil, rocks, lumber, masonry, soil, glass, plastics, steel, aluminum, drywall, insulation, plumbing fixtures, electrical materials, asphalt roofing materials, corrugated cardboard etc.

Waste material is among the main issue in several developed and developing municipalities around the globe. Waste has long been witnessed as a disaster in these communities since landfill areas are already exhausted at a more speedily pace; whilst planting innovative waste equipment is an extensive

and meticulous process. The increase of the acquisitiveness and consumptive philosophy has pushed on the creation of waste per capita. With growing understanding for green safety, we have witnessed an increased interest in state-of-art waste management amenities and incorporated answers to the waste challenge. Waste is sometimes considered as a cause of conflict in the politics ground for reasons such as the fixing of waste amenities and the acceptance of various waste management approaches. Continuing growth of the waste sector boasts substantial impacts on the interests of numerous public organizations [1, 2].

Basically, an extremely large amount of waste is believed to occur in buildings. Even though it is hard to methodically evaluate all wastes in construction, many research from different nations around the world have validated that waste presents a comparatively huge proportion of production rates. For instance, the C&D sector yearly generates three times the volume of waste produced by all United Kingdom homes combined solid waste [3, 4]. Previously, construction waste materials were merely left in wide open places or at the seaside as final process. Many of them used to be utilized in earth filling works yet with little work on wastes separation. Combined construction waste with high-value recyclables were buried simultaneously. Nevertheless, the motivation to reuse and recycle construction materials has decreased from the moment the flow of raw materials has grown more consistent and efficient [1, 5]. The comparatively affordable cost of virgin materials makes reuse and recycling a much less financially effective alternative [6].

Nowadays, an alternative, incorporated and life-cycle strategy and the waste hierarchy have been employed. Numerous measures aiming the construction technique itself from the planning and designing phase, demolition and construction operation phase and various actions that not particularly focus on the construction method alone were recommended and implemented regularly around the globe to minimize and manage construction waste.

Waste reduction in the construction sector is crucial not just from the perspective of effectiveness, but also interest has been escalating recently concerning the negative effects of the waste of construction materials on the environment. The aim of this paper is to evaluate the impact of construction waste minimization at site by assessing the impact of reused and recycled methods adopted in one of the selected project and highlight the benefit, challenges and future opportunities.

## 2.0 LITERATURE REVIEW

Bossink and Brouwers [7] carried out a study in Holland which focused on the measurement and prevention of construction waste pertaining to achieving sustainability prerequisite mentioned by Dutch

environmental guidelines. Waste from seven materials was examined in five dwelling construction tasks. The volume of direct waste by weight varied around 1 and 10% of the purchased quantity of materials. Also, it was deducted that the average 9% of the whole purchased construction materials end up as site waste in the Netherlands.

Forsythe [8] outlined the means where construction sector clients are addressing the necessity to enhance environmental efficiency of construction work. They presented a system for examining the effect of waste in the value of a project, such as its removal and disposal. This method applied waste results for six construction materials that varied from 2.5 to 22% in weight. All these were made due to a scientific research of 15 house-building sites. The research included the quantification of waste in accordance with the level of materials successfully shipped on-site, based on accessible records as well as on interview with officials of various contractors. Jones and Greenwood [3], provided percentage of waste in ten materials as plasterboard 36%, packaging 23%, cardboard 20%, insulation 10%, timber 4%, chipboard 2%, plastic 1%, electric cable 1%, and rubber 1%. While in another study in Hong Kong, shows that around 5-10% of building materials turn out to be waste on construction areas [9]. There are numerous contributory elements to this number such as, human, mechanical and so on..

A research in Malaysia indicated, composition and proportion of material debris: Soil 27%, wood 5%, brick and blocks 1.16%, metal product 1%, roofing material 0.20%, plastic and packaging materials 0.05%, concrete and aggregate 65.80% [10]. Thus, The current methods of managing waste as practiced in Malaysia are highly dependent on landfill due to low operational cost and the absence of alternative treatments [11-13]

### 2.1 Reasons for Minimizing Construction Waste Materials

The construction industry in Malaysia has been long away from environmental concerns like resources effectiveness, waste management, etc. One of the primary influences in Malaysia is the produces waste through their actions. Construction field in Malaysia is among the fastest growing industry, it contributes about 3.8 of the nation Gross domestic product and employs about 800,000 people and produce nearly 32% of the entire waste generated in the nation. By portion of the waste from this industry goes to landfill sites [14-16].

In addition, the construction sector occupies vast amounts of natural resources and produces a massive volume of construction and demolition (C&D) waste. This issue is not a remote situation in construction sectors [17], as the modern buildings need to attain certain performance requirements, at least to meet those of building codes, to present a safe, healthy, and comfortable environment [18, 19]. C&D wastes are huge dimension using up a

enormous length of area when they are discarded at landfills [11]. Although the amount of C&D waste received at landfills per capita per day in Malaysia is fairly small in comparison with other places, it is fundamental to minimize the volume of waste materials to be disposed at the landfills. The land supply for landfills and building sites is extremely limited. Minimizing and recycling construction wastes are thus an integral aspect of sustainability in future growth as the construction sector uses a large

number of materials. These materials consist of useful natural assets such as wood and steel. Certainly, There is a huge part of the materials being wasted due to negative products handle on construction sites [11].

In cases where the life-cycle of the material, from removal from the nature to their end destiny, is carefully analyzed, a lot of resources could be preserved.



Figure 1 Construction site, UTP R&D

### 3.0 METHODOLOGY

This paper involves an ongoing number of waste audits at UTP R&D construction sites. The method consists of discussion, observation and quantitative evaluations of the kinds and delivery of wastes. Mostly, the data is gathered from site audits. Additionally, purchasing stocks were examined against model plans to ascertain materials purchased. The data was then collated at the project site, and past related information were determine for any possible developments in wastes awareness. Ultimately, the data was evaluated on each and every phase of the construction practice, and concerns were brought up about the possibility to minimize waste and the different approaches adopted.

### 4.0 RESULTS AND DISCUSSION

#### 4.1.1 Case Study Description: UTP R&D

An office building was built at UTP by KLCC project and has been designated as a "Green Project" by the company as it includes green approaches and initiative and target towards Green Building Index (GBI) certification. This project was a three-story building (Figure 1), having floor space of 21225 sqm. The company employed numerous approaches for reducing construction waste materials. The concept behind achieving waste minimization had been prescribed to GBI requirement. Furthermore, cost reduction in waste disposal made this company think about their approaches concerning material procurement and storage.

#### 4.1.2 Waste Management Strategies

The project environmental obligation toward society, other stakeholders, and their prescription to sustainable management efforts position them a step ahead in waste management measures. The company also created a method for sustainability in the project. List of the actions or techniques employed by the company to be able to minimize the operational waste material within this project work were:

- *Just in time approach*: this way of procuring or ordering the materials required for construction would minimize most of the waste produced during storage and increase managing of the materials on the site.
- *Site assessment*: assessment and supervising the materials used, the activities being carried out on the site while their storage, managing and real construction work could additional minimize the waste produced throughout these actions.
- *Adequate and secured storage of materials*: inappropriate material storage on-site would frequently results in a large amount of waste. Therefore, sufficient and secured storage is essential as a way to minimize waste throughout the project activities. Materials such as glass, plasterboards etc. had to be kept appropriately.

#### 4.1.3 Towards GBI Certification

According to GBI certification points throughout construction, it is obligatory to provide dedicated locations and storage space for collecting non-hazardous materials for recycling. This consists of, but

is not restricted to wood, concrete, drywall, masonry, roofing materials, structural metal, steel wire, insulation, asphalt, packaging materials associated with C&D and natural vegetation due to clearing land for development.

The building contractors are to provide a waste management plan showing the selected area of storage and collection of construction waste to be recycled. The project needs to specify the materials to be diverted from discarding and if the materials can be sorted out on-site or commingled. For commingled recycled waste, a summary of diversion rates is needed from the recyclers. The contractor is to recycle and/or salvage at least 50% by volume of non-hazardous construction waste that is diverted from landfill. Estimated amount of waste to recycle are to be provided in the waste management plan. Names and information of waste management contractor/ salvagers are to be submitted for the Completion & Verification Assessment (CVA) for evaluation and approval. Details and proof of the amount of materials by measuring the total tonnage of waste of truckloads of waste disposal are to be noted and submitted to the CVA. Table 1 highlights the waste collection summary for the project towards achieving the certification. Furthermore, the contractor is to avoid polluting the surrounding location by means of appropriate disposal of domestic waste produced by on site personnel. Dedicated waste bins should be provided for the storage and disposal.

Table 1 Waste collection summary

Construction and completion two (2) Nos of research and development (R&D) buildings at Universiti Teknologi PETRONAS, Bandar Seri Iskandar, Perak Darul Ridzuan					
Summary of waste management					
No	Description	Total truck/Load	Location/Purpose	Document	Collector/ contractor
1	Timber debris	74	To boiler/ fire wood purposed, send to burning factory	Permission letter from rubbish collectors and application to remove material form	Under sub-con ( Tahap Tinggi). They appoint M/s Vell NM Enterprise to collect and handle the debris waste. Address: Vell NM Enterprise, Lot 36, Persiaran Batu Gajah Perdana 3, Taman Batu Gajah Perdana. 31550 Pusing, Perak Malaysia.  Salika Trading Address (office): No. 7, Jalan Tiga, First graden 30100 Ipoh, Perak, Malaysia Address (Factory): Lot 10908, Jalan Tiga, Wilayah Sungai Tumbuh, BT 19 ¾, Jalan Bota, 31750 Tronoh Perak, Malaysia
12	Scrap Metal	5	Sell	Receipts	Omega Metal Recycle Sdn. Bhd. Address: Lot 3574, Kampung Melayu Subang, Mukim Sungai Buloh, 40150 Shah Alam, Selengo, Mlaysia
	Domestic waste	28	Not mentioned	Receipts	Mr Gopeng Metal Recycle Sdn. Bhd. Address: PT 20065 Lot 29, Gopeng Industrial Park, Jlan Gopeng, 31600 Perak, Malaysia
<b>Total Load</b>		<b>102</b>			

## 4.2 Discussion

### 4.2.1 Methods: Project Demonstration

The UTP R&D Project focused on both minimizing the amount of waste generated and diverting as much waste as possible from landfill. On-site, the construction manager was designated to be in charge of waste management. In this site the construction manager developed a brief waste minimization plan prior to the project commencement and briefed all sub-contractors on their responsibilities. One point of difference in this study was the absence of a conventional skip. The only bin on-site was for timber as presented in Figure 2. All other waste was collected and dealt with instantly.



Figure 2 wood waste bin

### 4.2.2 GBI Point Score

It is important for the waste management plan (WMP) to commence during the design phase to ensure that waste can be designed out as far as possible. The next phase could be for the design personnel as well as the principal contractor to strategize to reduce the waste material that cannot be designed out. This can be accomplished through packaging minimization, or re-useable packaging options, distribution of adequate area on-site and management, preparation to minimize the possibility of damages to materials, or the off-site pre-fabrication of elements.

The percentage of full waste that is taken out from site for possibly re-use or reprocessing/recycling is called the 'recycling rate'. An essential variation need to be created between this and the diversion from landfill rate that includes every waste that is generated and is stopped by all means from heading to landfill. Targets for recycling and/or diversion from landfill must be established during the WMP and estimates made concerning waste sources created and how these can be handled. The project score 7 out of the 10 points in material and resources criteria as shown in Table 2 which evidently indicates that material reused and recycled were not satisfactorily at this time, while allocated different collection point for timber and domestic waste as signposted in Figure 3. Furthermore, the WMP was used to document waste removals and be examined at appropriate times by the contractor.

Table 2 GBI Point Score

MATERIAL & RESOURCES		Max Points	Current	Notes	
PART 4 --- MR (Material and resources)	<b>Reused &amp; Recycled Materials</b>				
	MR1	Material Reuse & Selection	2	0	
	MR2	Recycled Content Material	2	0	
	<b>Sustainable Resources</b>				
	MR3	Regional Materials	1	1	Provided as per Web Earth Specification 2.5.
	MR4	Sustainable Timber	1	0	
	<b>Waste Management</b>				
MR5	Storage & Collection Of Recyclables	1	1	Recycle bins to be provided as per GDP drawings	
MR6	Construction Waste Management	2	1	Contractor to sort and manage waste as per Web Earth specification 3.4 & 3.4.1	
<b>Green Products</b>					
MR7	Refrigerants & Clean Agents	2	1	No Ozone depleting refrigerants being used	
<b>Total Score</b>		<b>10</b>	<b>7</b>		

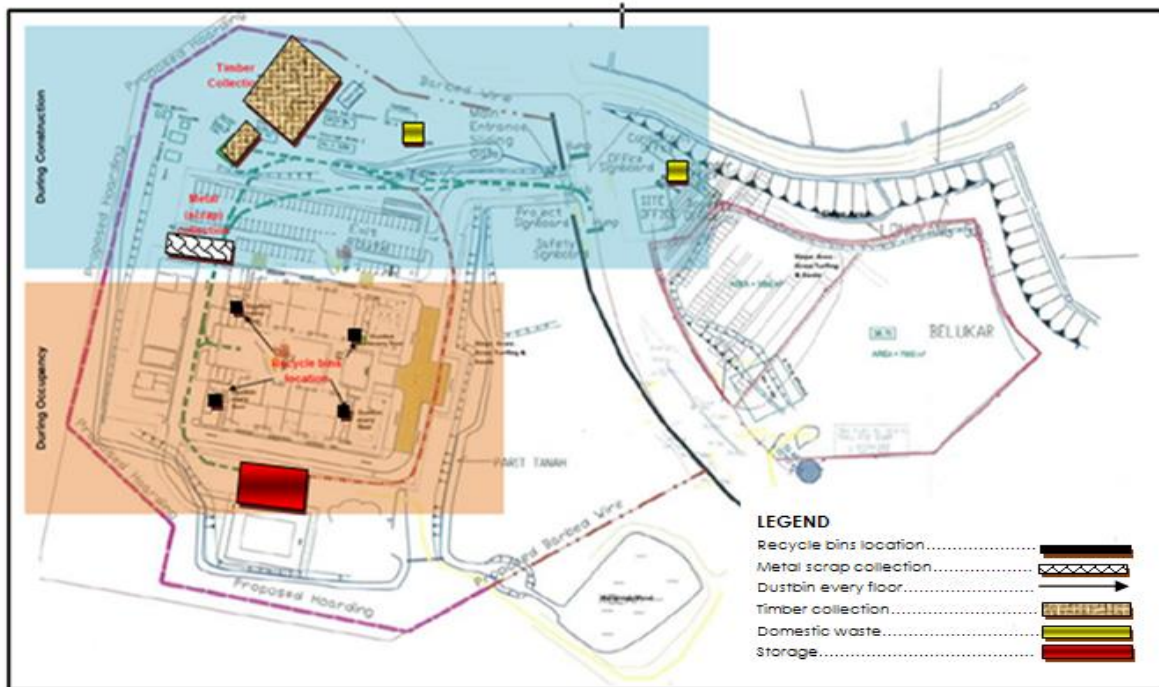
### 4.2.3 Material Reused and Recycled

Reuse and recycling of several materials and resources is developing into industrial standardized process. The UTP R&D project has recycled over 1200 tonnes of material to constitute about 73% of recycle and reuse rate mainly from timber and metal while domestic waste were sent to landfill as indicated in Table 3. For instance, antiseptic wood waste is

classified and shredded into woodchip. The shredding method eliminates metal particles like bolts, nuts and nails. The reprocessed woodchip is then utilized to be a raw material for identifying end sectors such as particleboard, manufacturing of compost and animal bedding, and as bio filter medium.

**Table 3** Recycled construction waste

Waste Materials	No	of
	Truck	Load
Timber	74	Reused
Scrap Metal	5	Reused
Domestic Waste	28	Landfill
Percentage of truck load reused waste material	73%	



**Figure 3** Waste collection points

### 4.2.4 Benefits and Opportunities

- The only bin on the site was that of timber and domestic waste any other waste materials were collected and taken off immediately when generated. This site continued to be neat and tidy, and the temptation to keep recyclables in the bin meant for the landfill was eradicated.
- Timber off-cuts were reclaimed by Place Makers, used for noggins, jack studs and blocking.
- Plumbing and drainage off cuts were taken by the supplier.
- Polystyrene off cuts from the cladding were taken back by the supplier who returned them to the maker for recycling.
- Good practice in terms of planning - construction schedule, monitored and updating, ordering materials ahead - meant not doing things in a hurry, but in an organized and coordinated way.
- Regular site reporting - the construction manager visits the site and keeps records on daily bases (capturing pictures and a few lines of information) thus identified issues/problems as occurred, not afterwards.

#### 4.2.5 Drivers for Re-use and Recycling

The major driver for the sustainability of the construction was the general approach from the clientele. The GBI strategy was applied both as a driver as well as an evaluation of success. Dedication to recycling and re-use throughout the project teams is vital to providing great recycling and re-use rates. Having a knowledgeable and passionate project team that is ready to team up and implement innovative thoughts offers optimum recycling and reuse rates. The team guaranteed that easily obtainable waste materials would be re-used within the fit-out as a substitute for traditional materials. This dedication was considered as a corporate social responsibility and to raise understanding between the workers, foreseeable future project consultancy teams, checking out sub-contractors and overall site guests. The teams followed this idea realizing that maximizing the recycling of excess or discarded materials would guarantee the project ability to minimize landfill and waste generation, preserve natural resources, minimize carbon dioxide, save energy (turning recycled material into new material takes less energy than turning raw material into new material) and make additional job opportunities.

#### 4.2.6 Challenges

The client's briefly stated that expenditures have to be well-balanced and that the purchase price should not go beyond that of a traditional fit-out. In this manner the process was to stabilize how long the enhances of recycling and re-use can exist without impacting the finances. From the architect's perspective, indicating recycling of materials can be viewed as a threat because it is difficult to determine the magnitude of recycling that can take place until the project is started. During the project, building contractors involved personnel by carrying information consultations and stakeholder involvement seminars. This allowed them to predict and tackle issues as or perhaps prior to their occurrence. The design teams worked with the construction team to increase possibilities for recycling and re-use rate.

#### 4.2.7 Specifications and Possibilities for Other Projects

The lessons learned by the project team accountable for this project will carry forward to future projects and allow the architects and contractors to regularly achieve substantial construction recycling and re-use rates and to minimize costs and time during the design, specification and construction of a building. Carry out a waste management plan for all construction works, regardless of how small. When specifying materials within a new build or refurbishment, the designer has the chance to nominate cladding and materials to be purchased from a reclaimed source within finishes schedule and specification

requirements. The head contractor then can present opportunities to the designer and client that could allow materials and products to be reused and diverted from landfill or elimination of the use of virgin materials. All offices need to develop a recycling and waste management plan to motivate enhancements and waste reduction.

## 5.0 CONCLUSION.

The outcomes of this study reveal that waste can be minimized quite successfully if waste minimization is recognized as a section of the contract. On-site segregation of waste and reusing of material was the best widely implemented methods to minimize waste. Furthermore the result shows that, minimizing waste is regarded as an ad hoc activity not an aspect of the central task of the construction. During implementation of the project, it was discovered that employees are not utilized effectively pertaining to minimize waste on site. In essence, the key findings of the study are that construction waste minimization is rewarding for construction companies within the present cost structure for waste disposal in Malaysia. Despite clear economic incentives, waste on many occasions is not really minimized. Lack of minimization is associated with commercial imperative. Local authorities play a vital role in alleviating initial obstacles. Markets are available for a massive amount recoverable; nonetheless they are under-utilized. The recycling sector facilities are not well developed or integrated and prospective members have difficulty in getting information and contacting recyclers.

## Acknowledgement

The authors are thankful to Ministry of Education, Malaysia for providing financial support (Grant No. 0153AB-J13) for this research under MyRA grant scheme.

## References

- [1] Hostovsky, C. and Maclaren, V. 2005. The Role of Public Consultation in Vietnamese Waste and Other EIAs. *First International Conference on Integrated Solid Waste Management in Southeast Asia*. 5-6.
- [2] Zawawi, E., Yusof, N., Kamaruzzaman, S., and Ismail, Z. 2015. Important Criteria For Managing Disaster Waste In Malaysia. *Jurnal Teknologi*. 75.
- [3] Jones, P. and Greenwood, R., 2003. Construction Waste Minimisation From The UK Housing Sector. Centre for Research on the Built Environment, Welsh School of Architecture. Cardiff University, Cardiff.
- [4] Jones, P. and Greenwood, R. 2003. Construction Waste Minimisation in Housing. ed.

- [5] Network, L. R. 2008. History – Waste Management. Available: <http://www.grc.cf.ac.uk/Im/resources/waste/history.php>.
- [6] Robinson, G. 2007. Changes In Construction Waste Management. *Waste Management World*. 3: 43-492.
- [7] B. Bossink and H. Brouwers. 1996. Construction Waste: Quantification And Source Evaluation. *Journal of Construction Engineering And Management*. 122: 55-60.
- [8] Forsythe, P. and Marsden, P. 2003. Modelling Construction Waste Performance—An Arising Procurement Issue. *Profitable Partnering in Construction Procurement*. 427,
- [9] Yahya, K. and Halim, Bousabaine A. 2006. Eco-Costing Of Construction Waste. *Management of Environmental Quality: An International Journal*. 17: 6-19.
- [10] Begum, R. A., Siwar, C., Pereira, J. J., and Jaafar, A. H. 2007. Implementation Of Waste Management And Minimisation In The Construction Industry Of Malaysia. *Resources. Conservation C.-S.and Recycling*. 51: 190-202.
- [11] Poon, Yu A. T., and Jaillon L., 2004. Reducing Building Waste At Construction Sites In Hong Kong. *Construction Management and Economics*. 22: 461-470.
- [12] Kamyab, H., Lim, J. S., T. Khademi, Hod W. S., Ahmad, R., Hashim, H., et al. 2015. Greenhouse Gas Emission of Organic Waste Composting: A Case Study of Universiti Teknologi Malaysia Green Campus Flagship Project. *Jurnal Teknologi*. 74.
- [13] Kalanatarifard, A. and Yang, G. S., 2012. Identification of The Municipal Solid Waste Characteristics And Potential Of Plastic Recovery At Bakri Landfill, Muar, Malaysia. *Journal of Sustainable Development*. 5: 11.
- [14] Malaysia, D. 2013. Statistics yearbook Malaysia 2012. Department of Statistics. Malaysia.
- [15] D. o. S. Malaysia. Construction. 2013a.
- [16] Olanrewaju, A. L. and Abdul-Aziz, A.-R. 2015. An Overview of the Construction Industry. in *Building Maintenance Processes and Practices*. ed: Springer. 9-32.
- [17] Cheung, C., Wong, K., Fan, C., and Poon, C. 1993. Reduction Of Construction Waste: Final Report. The Hong Kong Polytechnic University and Hong Kong Construction Association, Hong Kong.
- [18] U. A. Umar, H. Tukur, M. Khamidi, and A. U. Alkali, 2013. Impact of Environmental Assessment of Green Building Materials on Sustainable Rating System. *Advanced Materials Research*. 398-402.
- [19] Umar, U. A., Khamidi, M. F., And Alkali, A. U. 2012. The Repercussions Linked With A Changing Macroclimate For Green Building. In *Humanities, Science And Engineering (CHUSER), 2012 IEEE Colloquium on*. 392-397.